

Wyoming is a sheep state.



Although the number of sheep has declined over the past 50 years, Wyoming is still a quality state for sheep production and ranks third nationally in sheep production. Sheep have proven to be a valuable tool when managing sagebrush/grass ecosystems, while providing a source of income from lambs and wool.

Sheep producers throughout Wyoming have consistently produced high quality breeding stock, lambs and wool for consumers. The state's sheep are desired by consumers throughout the nation for multiple reasons and high quality is a constant.

The Wyoming State Fair takes pride in being the showcase of quality Wyoming sheep and in maintaining quality animal husbandry standards for the sheep industry.

Please join us at your Wyoming State Fair and Rodeo, beginning on the second Saturday in August.

Wyoming Youth and Sheep

- ▶ Nearly 2000 Wyoming youth own and exhibit sheep annually through the 4-H and FFA youth programs.
- ▶ Wyoming youth compete for over \$11,000 in premiums annually at the Wyoming State Fair in junior sheep events.
- ▶ To compete in events at the Wyoming State Fair in August, the following requirements must be met (NO EXCEPTIONS):
 - All sheep must be owned by the individual youth member by June 1.
 - All market lambs must be properly tagged with designated Wyoming State Fair tags.
 - All sheep (breeding and market) must be identified with USDA/APHIS scrapie identifications tags.
 - All sheep must meet the Wyoming Tail Docking Guidelines.

For more information:

Wyoming State Fair and Rodeo

Phone: (307) 358-2398

Fax: (307) 358-6030

E-mail: wsf@netcommander.com

Web: www.wystatefair.com

Americans with Disabilities Act: To obtain this publication in an alternative format, contact the Wyoming Department of Agriculture or visit http://www.wyomingworkforce.org/how/vr_wyrdstele_services.aspx.

Sheep skeleton diagram courtesy of Colorado State University. Other photos courtesy of the WDA file.

Wyoming Tail Docking Guidelines



Tail Docking Policy:

This policy was developed in the fall of 2005 by the Wyoming Department of Agriculture, Wyoming State Fair, Wyoming Wool Growers Association and Wyoming Club Lamb Association.

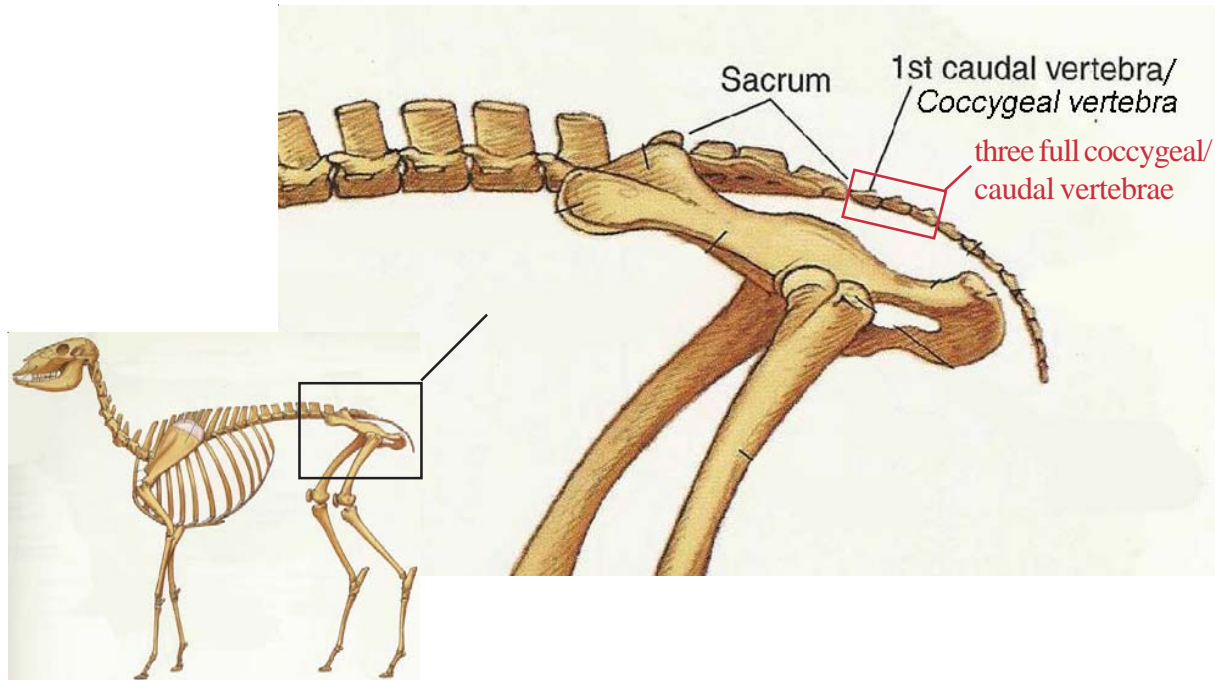
▶ Every sheep, born after Dec. 1, 2005, that shows at the Wyoming State Fair must be accompanied by one of three official forms. These forms include the Wyoming brand inspection certificate; the Wyoming certificate of veterinary inspection; or the Wyoming State Fair Veterinarian Certification Statement.

▶ One of these official forms must be signed by a licensed Wyoming veterinarian who has a doctor/client relationship with the owner of the animal and who attests to the fact that the animal has a minimum of three (3) full coccygeal/caudal vertebrae in place.

▶ All signed documentation must be completed prior to arrival at the State Fair animal health check-in.

▶ The official signed certificate will be checked prior to entry at the Wyoming State Fair.

▶ All exhibitors that arrive at the Wyoming State Fair and are cleared with the proper signed documentation will be allowed to show their sheep (unless a protest is filed and upheld).



The Wyoming State Fair Protest Policy:

▶ An individual may file a protest regarding the proper length of a sheep's tail. The protest must be filed in writing to the State Fair Director prior to the animal entering the show ring.

▶ The written protest must be accompanied by a \$50 fee, in cash or certified check, presented to the State Fair Director. (Note: Fee is refunded if protest is upheld.)

▶ State Fair staff and the exhibitor/owner of the animal will obtain an x-ray of the animal. The official Wyoming State Fair Veterinarian or his designee will read the x-ray and make the final determination regarding the number of full coccygeal/caudal vertebrae in place.

▶ The Wyoming State Veterinarian or his designee and State Fair management staff will review the documentation submitted by the originating veterinarian and appropriate action will be taken.

▶ If the protest is upheld and the animal does not meet the established requirement, the sheep must be immediately removed from the grounds and will not be allowed to show in any event.